



# SURFACE VEHICLE RECOMMENDED PRACTICE

J228™

SEP2024

Issued 1971-03  
Reaffirmed 1995-04  
Stabilized 2024-09

Superseding J228 APR1995

## Airflow Reference Standards

### RATIONALE

SAE J228 has been reviewed by the Engine Power Test Committee and is being stabilized because it covers technology, products, or processes which are mature and not likely to change in the foreseeable future.

### STABILIZED NOTICE

This document has been declared "STABILIZED" by SAE Engine Power Test Code Committee and will no longer be subjected to periodic reviews for currency. Users are responsible for verifying references and continued suitability of technical requirements. Newer technology may exist.

SAENORM.COM : Click to view the full PDF of J228\_202409

SAE Executive Standards Committee Rules provide that: "This report is published by SAE to advance the state of technical and engineering sciences. The use of this report is entirely voluntary, and its applicability and suitability for any particular use, including any patent infringement arising therefrom, is the sole responsibility of the user."

SAE reviews each technical report at least every five years at which time it may be revised, reaffirmed, stabilized, or cancelled. SAE invites your written comments and suggestions.

Copyright © 2024 SAE International

All rights reserved. No part of this publication may be reproduced, stored in a retrieval system, transmitted, in any form or by any means, electronic, mechanical, photocopying, recording, or otherwise, or used for text and data mining, AI training, or similar technologies, without the prior written permission of SAE.

**TO PLACE A DOCUMENT ORDER:** Tel: 877-606-7323 (inside USA and Canada)  
Tel: +1 724-776-4970 (outside USA)  
Fax: 724-776-0790  
Email: CustomerService@sae.org  
<http://www.sae.org>

SAE WEB ADDRESS:

**For more information on this standard, visit**

[https://www.sae.org/standards/content/J228\\_202409/](https://www.sae.org/standards/content/J228_202409/)

1. **Scope**—The purpose of this SAE Recommended Practice is to establish reference standards for airflow measurements in the ranges required for testing automotive engine induction systems and to describe equipment that will facilitate the use of such standards to check the accuracy of various equipment and methods.
  2. **References**—There are no referenced publications specified herein.
  3. **Airflow Nozzle Definition**—The airflow reference system consists of a series of 10 nozzles called Calibration Transfer Nozzles, which are designed for operation at sonic flow velocities. Each nozzle is identified by a particular serial number and its nominal airflow, expressed in grams per second, at standard flow conditions. For this document, standard conditions are defined as:
    - a. Air Pressure—100 kPa ABS
    - b. Exit Pressure—less than 45 kPa ABS
    - c. Air Temperature—25 °C
    - d. Ambient Relative Humidity—35%
- 3.1 The nominal flow values established for the series of nozzles that should be used are: 1, 5, 10, 15, 20, 25, 50, 100, 150, and 200 g/s.

Typical outline dimensions and nozzle shape of an approved calibration transfer nozzle are shown in Figure 1. Nozzles produced for use in accordance with this document must be calibrated by a procedure which establishes an overall uncertainty (possible bias plus three standard errors) with 0.2% of a primary standard traceable to the National Institute of Standards and Technology (NIST).

SAENORM.COM : Click to view the full PDF of J228-202409

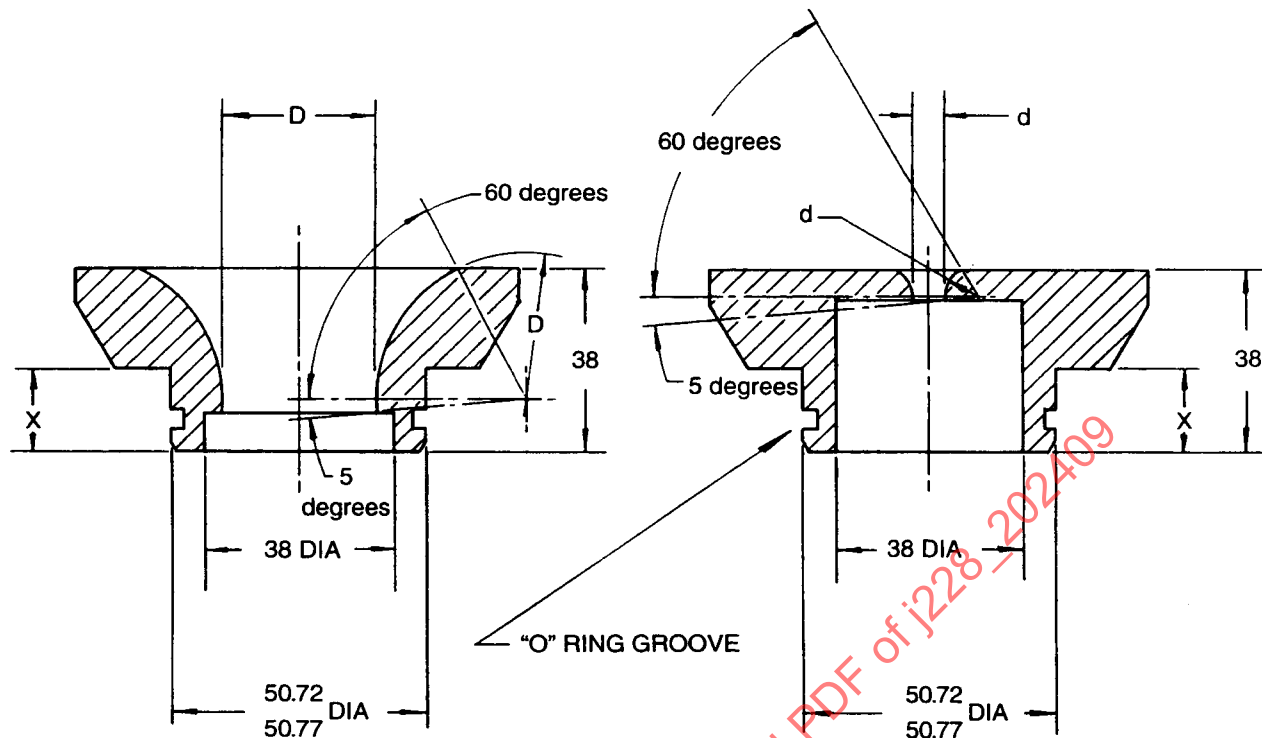


FIGURE 1—TYPICAL OUTLINES OF AIRFLOW CALIBRATION TRANSFER NOZZLE

4. **Accessory Hardware and Instrumentation**—Figure 2 shows the nozzle holder which provides the adaptation necessary to fit the user's test equipment. The construction details of the holder are optional, but the dimensions of the air section must be retained. During use, there shall be no obstruction upstream of the nozzle inlet face for a distance of  $5 D_{\max}$  in a direction parallel to the flow and for a distance of  $3 D_{\max}$  in a direction perpendicular to the flow, where  $D_{\max}$  is the throat diameter of the largest nozzle. Although the kind of temperature and pressure measuring instruments are not specified in this document, their accuracy must be traceable to the NIST and the overall uncertainty of their readings must be within 0.1% of actual. These instruments should be placed upstream of the nozzle entrance, preferably at a distance equal to the obstruction limits (see Figure 3). When calibration transfer nozzles are used for correlation between flow locations, a single set of temperature and pressure measuring instruments shall be used.

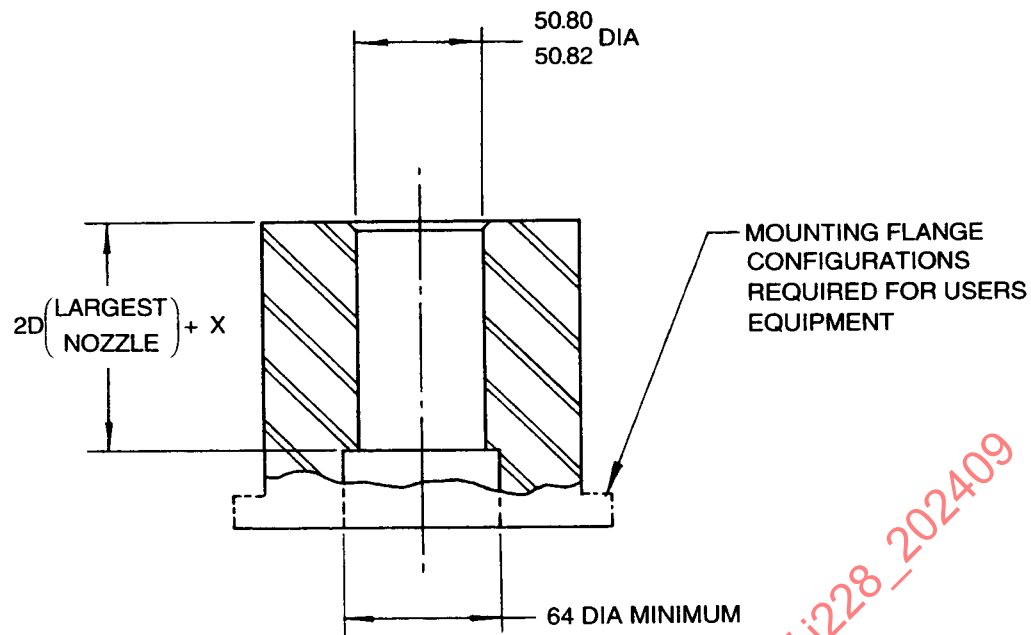


FIGURE 2—NOZZLE HOLDER

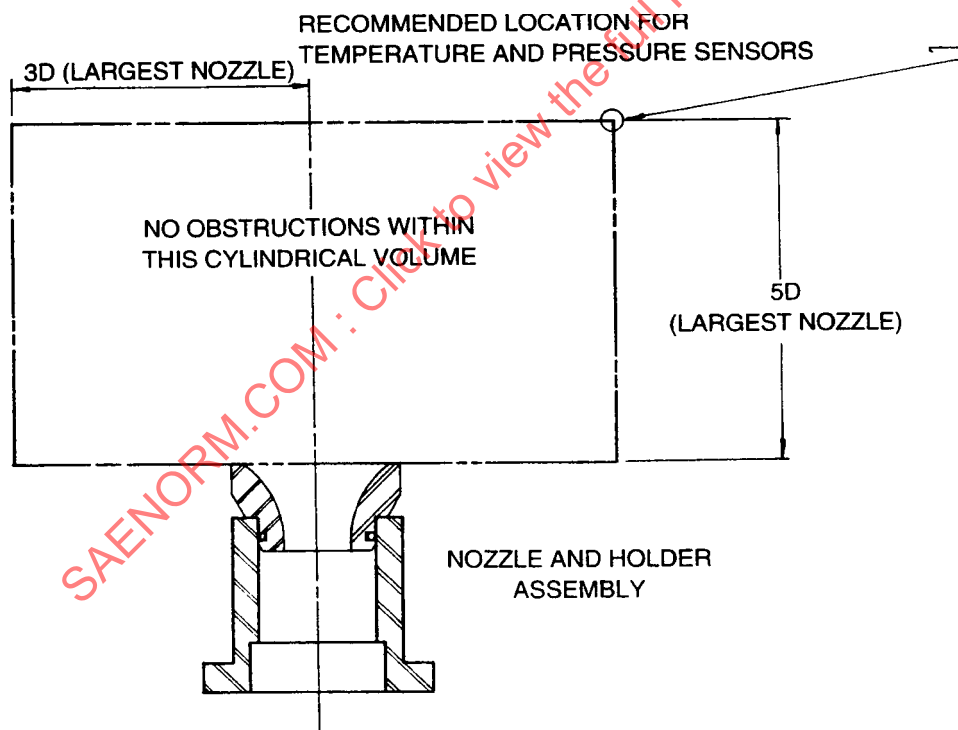


FIGURE 3—NOZZLE ENTRANCE OBSTRUCTION LIMITS