



A Product of the
Cooperative Engineering Program

SAE J1353 APR87

Nomenclature — Clam Bunk Skidder

**SAE Recommended Practice
Issued April 1987**

SAENORM.COM : Click to view the full PDF of J1353-APR8704

**Submitted for Recognition as
an American National Standard**

SAENORM.COM : Click to view the full PDF of J1353_198704

No part of this publication may be reproduced in any form, in an electronic retrieval system or otherwise, without the prior written permission of the publisher.

Copyright 1987 Society of Automotive Engineers, Inc.

NOMENCLATURE - CLAM BUNK SKIDDER

1. **PURPOSE:** To provide standardization of terms for major components of Clam Bunk Skidders.
2. **SCOPE:** This recommended practice identifies major components and parts peculiar to clam bunk skidders, described in SAE J1209 JAN85, Identification Terminology of Mobile Forestry Machines.

Illustrations used here are not intended to include all existing machines or to be exactly descriptive of any particular machine. They have been provided to illustrate the principles to be used in applying this recommended practice.

3. **DEFINITIONS:** Clam Bunk Skidder (FIGS. 1 and 2)

A self-propelled machine designed to transport trees, or parts of trees, by trailing or dragging, using an integrally mounted grapple loader to assemble the load, and a clam or top-opening jaws to hold the load.

SAE Technical Board Rules provide that: "This report is published by SAE to advance the state of technical and engineering sciences. The use of this report is entirely voluntary, and its applicability and suitability for any particular use, including any patent infringement arising therefrom, is the sole responsibility of the user."

SAE reviews each technical report at least every five years at which time it may be reaffirmed, revised, or cancelled. SAE invites your written comments and suggestions.

NOMENCLATURE:

- | | |
|---|-------------------------------------|
| 1. Bogie Track | 22. Swing Assembly |
| 2. Axle | 23. Mast |
| a) Single | 24. Head |
| b) Bogie | 25. Main Boom |
| 3. Headboard | 26. Main Boom Cylinder |
| 4. Axis of Rotation | 27. Stick (Secondary) Boom |
| a) Loader | 28. Stick (Secondary) Boom Cylinder |
| b) Clam Bunk | 29. Lever |
| 5. Stabilizer | 30. Link |
| 6. Stabilizer Arm | 31. Grapple Yoke |
| 7. Stabilizer Cylinder | 32. Grapple Rotator Assembly |
| 8. Stabilizer Pad | 33. Grapple |
| 9. Rear Frame | 34. Grapple Arm Cylinder |
| 10. Steering Cylinder | 35. Grapple Head |
| 11. Front Frame | 36. Grapple Arm |
| 12. Tire | 37. Clam Bunk |
| 13. Blade Arm | 38. Clam Arm |
| 14. Blade | 39. Clam Arm Cylinder |
| 15. Decking Lug | 40. Clam Swivel |
| 16. Blade Cylinder | 41. Load Restraining Cables |
| 17. Oscillation Lock
(Axle or Frame Oscillation) | 42. Undercarriage |
| 18. Engine | |
| 19. Canopy | |
| a) Open | |
| b) Enclosed | |
| 20. Canopy Sweep | |
| 21. Loader Mechanism composed
of items 22 through 36 | |

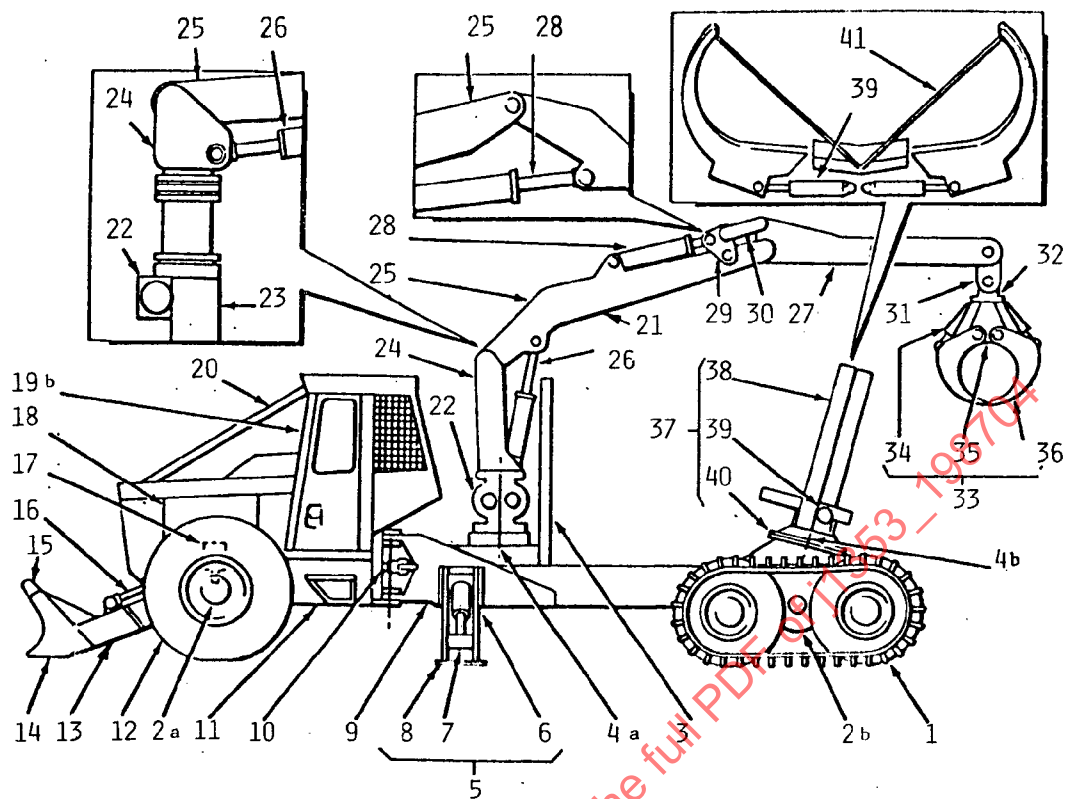


FIG. 1

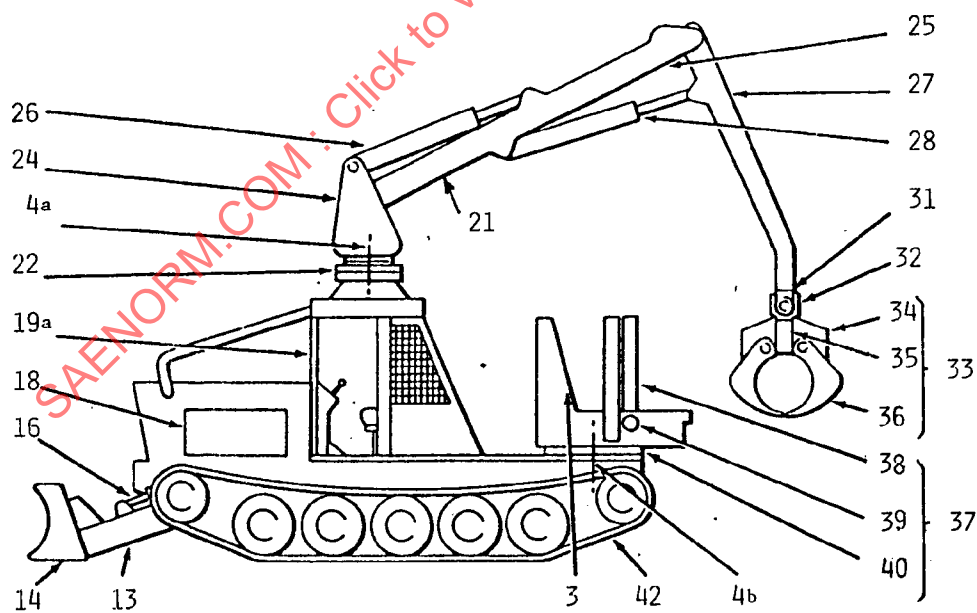


FIG. 2

RATIONALE:

This document will provide the forest industry with a document that will permit standardization of terms for major components and parts peculiar to these machines.

Full consensus was not obtained for the term "stick boom" from the forest industry. The industry was surveyed to determine the terminology presently used for this component. The survey indicated a variety of terms are presently being used, however, the two most widely used are "stick" or "secondary boom", with the "stick boom" having the larger percentage.

To keep with SAE Practices, and remain consistent with existing forestry documents (Ref.: J1254, J1255), the term "stick boom" was chosen with "secondary" in parenthesis.

RELATIONSHIP OF SAE STANDARD TO ISO STANDARD:

Not applicable.

REFERENCE SECTION:

SAE J1209 JAN85, Identification Terminology of Mobile Forestry

APPLICATION:

This recommended practice identifies major components and parts peculiar to clam bunk skidders, described in SAE J1209.

COMMITTEE COMPOSITION:

DEVELOPED BY THE SAE ORMTC/SUBCOMMITTEE 28, FORESTRY AND LOGGING MACHINERY:

D. Oldenburg, Caterpillar Tractor Co., Aurora, IL - Chairman
D. J. Paisley, Deere & Co., Dubuque, IA - Vice Chairman
C. R. Barker, AMCA International Corp., Brantford, Ontario Canada
J. F. Briggs Jr., Franklin Equipment Co., Franklin, VA
R. C. Henneman, Paccar Inc., Broken Arrow, OK
R. J. Karsky, Dept. of Agriculture, Missoula, MT
I. McKenzie, Clark Equipment of Canada Ltd., Ontario, Canada
R. A. Montgomery, Esco Corporation, Danville, IL
W. C. Roberson, Franklin Equip. Co., Franklin, VA
D. L. Sirois, Dept. of Agriculture, Auburn, AL
T. J. Smith, Timberjack, Inc., Woodstock, Ontario, Canada

SPONSORED BY THE SAE OFF-ROAD MACHINERY COMMITTEE:

W. L. Black, VME Americas Inc., Niles, MI - Chairman
G. C. Randall, Ford Motor Co., Troy, MI - Vice Chairman
D. G. Castine, Trojan Industries Inc., Batavia, NY