

SAE Technical Standards Board Rules provide that: "This report is published by SAE to advance the state of technical and engineering sciences. The use of this report is entirely voluntary, and its applicability and suitability for any particular use, including any patent infringement arising therefrom, is the sole responsibility of the user."

SAE reviews each technical report at least every five years at which time it may be reaffirmed, revised, or cancelled. SAE invites your written comments and suggestions.

AS9496

FEDERAL SUPPLY CLASS
5306

NOTICE

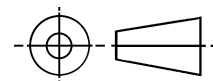
THIS DOCUMENT HAS BEEN TAKEN DIRECTLY FROM U.S. MILITARY SPECIFICATION MS9496A, AMENDMENT 1, NOTICE 1 AND CONTAINS ONLY MINOR EDITORIAL AND FORMAT CHANGES REQUIRED TO BRING IT INTO CONFORMANCE WITH THE PUBLISHING REQUIREMENTS OF SAE TECHNICAL STANDARDS. THE INITIAL RELEASE OF THIS DOCUMENT IS INTENDED TO REPLACE MS9496A, AMENDMENT 1, NOTICE 1. ANY PART NUMBERS ESTABLISHED BY THE ORIGINAL SPECIFICATION REMAIN UNCHANGED.

THE ORIGINAL MILITARY SPECIFICATION WAS ADOPTED AS AN SAE STANDARD UNDER THE PROVISIONS OF THE SAE TECHNICAL STANDARDS BOARD (TSB) RULES AND REGULATIONS (TSB 001) PERTAINING TO ACCELERATED ADOPTION OF GOVERNMENT SPECIFICATIONS AND STANDARDS. TSB RULES PROVIDE FOR (A) THE PUBLICATION OF PORTIONS OF UNREVISED GOVERNMENT SPECIFICATIONS AND STANDARDS WITHOUT CONSENSUS VOTING AT THE SAE COMMITTEE LEVEL, AND (B) THE USE OF THE EXISTING GOVERNMENT SPECIFICATION OR STANDARD FORMAT.

UNDER DEPARTMENT OF DEFENSE POLICIES AND PROCEDURES, ANY QUALIFICATION REQUIREMENTS AND ASSOCIATED QUALIFIED PRODUCTS LISTS ARE MANDATORY FOR DOD CONTRACTS. ANY REQUIREMENT RELATING TO QUALIFIED PRODUCTS LISTS (QPL'S) HAS NOT BEEN ADOPTED BY SAE AND IS NOT PART OF THIS SAE TECHNICAL DOCUMENT.

SAENORM.COM : Click to view the full PDF of as9496

THIRD ANGLE PROJECTION



ISSUED 1999-08

PREPARED BY SAE COMMITTEE E-25

PROCUREMENT SPECIFICATION: NONE

SAE The Engineering Society
For Advancing Mobility
Land Sea Air and Space®
INTERNATIONAL
400 Commonwealth Drive, Warrendale, PA 15096-0001

AEROSPACE STANDARD

BOLT, MACHINE - HEXAGON HEAD, FULL SHANK,
AMS 5731, .625-18 UNJF-3A

AS9496
SHEET 1 OF 3

Copyright 1999 Society of Automotive Engineers, Inc.
All rights reserved.

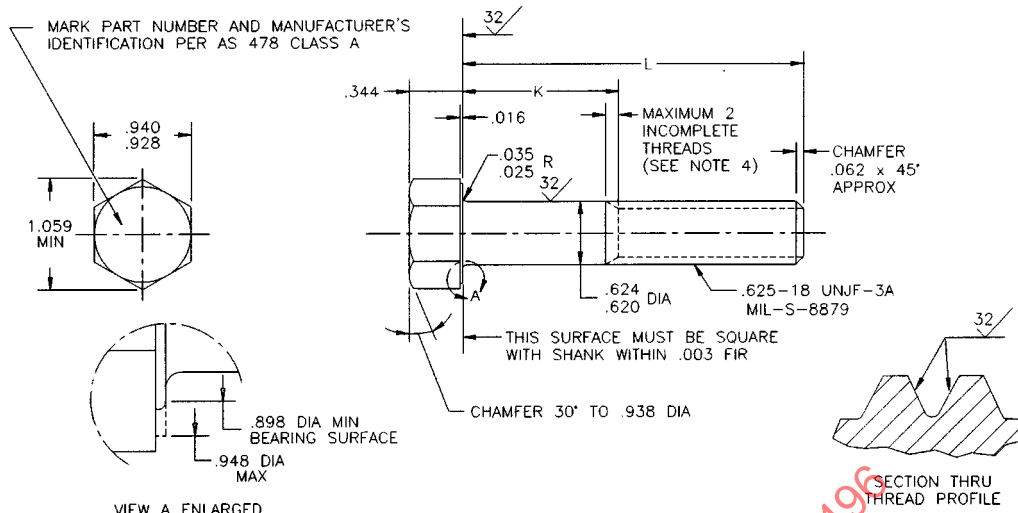
Printed in the U.S.A.

QUESTIONS REGARDING THIS DOCUMENT: (724) 772-8510
TO PLACE A DOCUMENT ORDER: (724) 776-4970

FAX: (724) 776-0243
FAX: (724) 776-0790

SAE WEB ADDRESS: <http://www.sae.org>

AS9496



PART NUMBER	L	K	APPROX WEIGHT LB/100	PART NUMBER	L	K	APPROX WEIGHT LB/100
MS9496-03	.938	.118-.138	15.59	MS9496-31	3.500	1.940-2.000	37.86
MS9496-04	1.000	.118-.138	16.13	MS9496-32	3.625	2.065-2.125	38.94
MS9496-05	1.062	.118-.138	16.67	MS9496-33	3.750	2.190-2.250	40.03
MS9496-06	1.125	.118-.138	17.21	MS9496-34	3.875	2.315-2.375	41.12
MS9496-07	1.188	.118-.138	17.76	MS9496-35	4.000	2.440-2.500	42.20
MS9496-08	1.250	.118-.138	18.30	MS9496-36	4.125	2.565-2.625	43.29
MS9496-09	1.312	.118-.138	18.84	MS9496-37	4.250	2.690-2.750	44.37
MS9496-10	1.375	.118-.138	19.39	MS9496-38	4.375	2.815-2.875	45.46
MS9496-11	1.438	.118-.138	19.93	MS9496-39	4.500	2.940-3.000	46.55
MS9496-12	1.500	.118-.138	20.37	MS9496-40	4.625	3.065-3.125	47.63
MS9496-13	1.562	.118-.138	21.01	MS9496-41	4.750	3.190-3.250	48.72
MS9496-14	1.625	.118-.138	21.56	MS9496-42	4.875	3.315-3.375	49.81
MS9496-15	1.688	.128-.188	22.11	MS9496-43	5.000	3.440-3.500	50.89
MS9496-16	1.750	.190-.250	22.65	MS9496-44	5.125	3.565-3.625	51.98
MS9496-17	1.812	.252-.312	23.19	MS9496-45	5.250	3.690-3.750	53.07
MS9496-18	1.875	.315-.375	23.73	MS9496-46	5.375	3.815-3.875	54.15
MS9496-19	2.000	.440-.500	24.82	MS9496-47	5.500	3.940-4.000	55.24
MS9496-20	2.125	.565-.625	25.90	MS9496-48	5.625	4.065-4.125	56.33
MS9496-21	2.250	.690-.750	26.99	MS9496-49	5.750	4.190-4.250	57.41
MS9496-22	2.375	.815-.875	28.08	MS9496-50	5.875	4.315-4.375	58.50
MS9496-23	2.500	.940-1.000	29.16	MS9496-51	6.000	4.440-4.500	59.59
MS9496-24	2.625	1.065-1.125	30.25	MS9496-52	1.938	.378-.438	24.28
MS9496-25	2.750	1.190-1.250	31.34				
MS9496-26	2.875	1.315-1.375	32.42				
MS9496-27	3.000	1.440-1.500	33.51				
MS9496-28	3.125	1.565-1.625	34.60				
MS9496-29	3.250	1.690-1.750	35.68				
MS9496-30	3.375	1.815-1.875	36.77				