

AS90328

FEDERAL SUPPLY CLASS
6150

NOTICE

THIS DOCUMENT HAS BEEN TAKEN DIRECTLY FROM U.S. MILITARY SPECIFICATION MS90328G AND CONTAINS ONLY MINOR EDITORIAL AND FORMAT CHANGES REQUIRED TO BRING IT INTO CONFORMANCE WITH THE PUBLISHING REQUIREMENTS OF SAE TECHNICAL STANDARDS. THE INITIAL RELEASE OF THIS DOCUMENT IS INTENDED TO REPLACE MS90328G. ANY PART NUMBERS ESTABLISHED BY THE ORIGINAL SPECIFICATION REMAIN UNCHANGED.

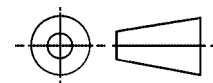
THE ORIGINAL MILITARY SPECIFICATION WAS ADOPTED AS AN SAE STANDARD UNDER THE PROVISIONS OF THE SAE TECHNICAL STANDARDS BOARD (TSB) RULES AND REGULATIONS (TSB 001) PERTAINING TO ACCELERATED ADOPTION OF GOVERNMENT SPECIFICATIONS AND STANDARDS. TSB RULES PROVIDE FOR (A) THE PUBLICATION OF PORTIONS OF UNREVISED GOVERNMENT SPECIFICATIONS AND STANDARDS WITHOUT CONSENSUS VOTING AT THE SAE COMMITTEE LEVEL, AND (B) THE USE OF THE EXISTING GOVERNMENT SPECIFICATION OR STANDARD FORMAT.

UNDER DEPARTMENT OF DEFENSE POLICIES AND PROCEDURES, ANY QUALIFICATION REQUIREMENTS AND ASSOCIATED QUALIFIED PRODUCTS LISTS ARE MANDATORY FOR DOD CONTRACTS. ANY REQUIREMENT RELATING TO QUALIFIED PRODUCTS LISTS (QPL'S) HAS NOT BEEN ADOPTED BY SAE AND IS NOT PART OF THIS SAE TECHNICAL DOCUMENT.

SAENORM.COM : Click to view the full PDF of as90328

SAE values your input. To provide feedback on this Technical Report, please visit <http://www.sae.org/technical/standards/AS90328>

THIRD ANGLE PROJECTION



PREPARED BY SAE SUBCOMMITTEE AE-8F

SAE Aerospace
An SAE International Group

AEROSPACE STANDARD

CABLE ASSEMBLY
EXTERNAL ELECTRIC POWER,
AIRCRAFT 115/200 VOLT, 400 HERTZ

AS90328
SHEET 1 OF 4

ISSUED 2000-03 REAFFIRMED 2009-09

THE REQUIREMENTS FOR ACQUIRING THE PRODUCT(S) DESCRIBED HEREIN SHALL CONSIST OF THIS SPECIFICATION SHEET AND THE ISSUE OF THE FOLLOWING SPECIFICATION LISTED IN THAT ISSUE OF THE DODISS SPECIFIED IN THE SOLICITATION: MIL-C-7974.

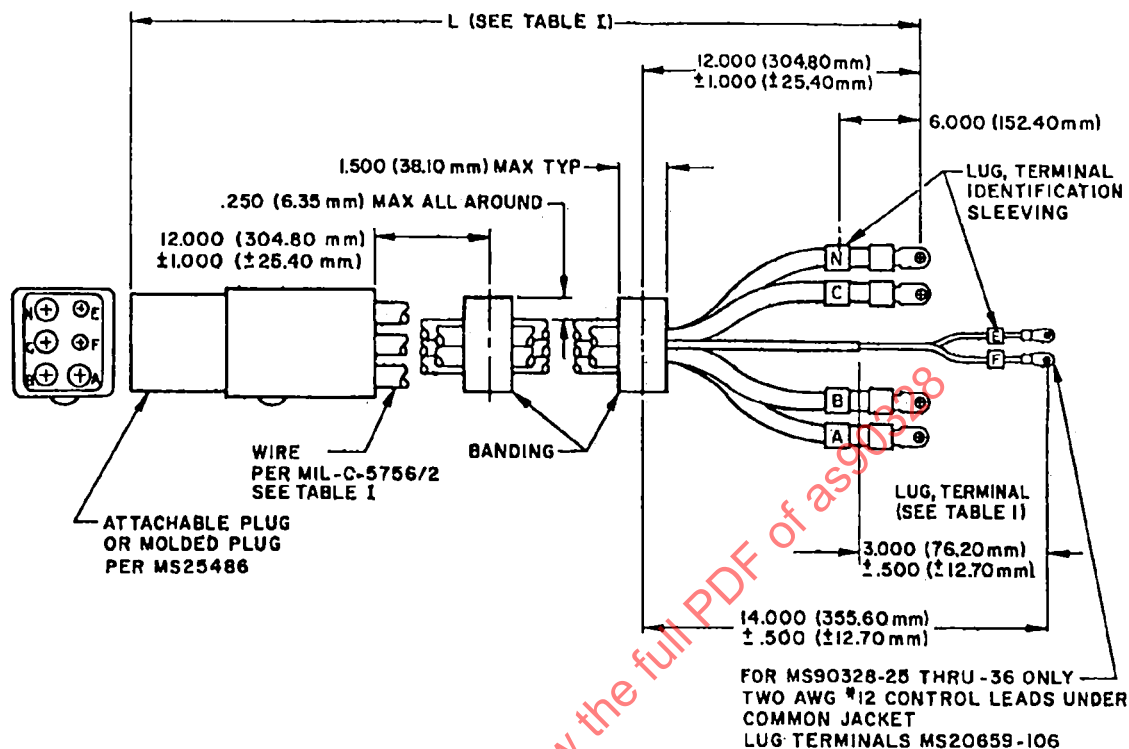
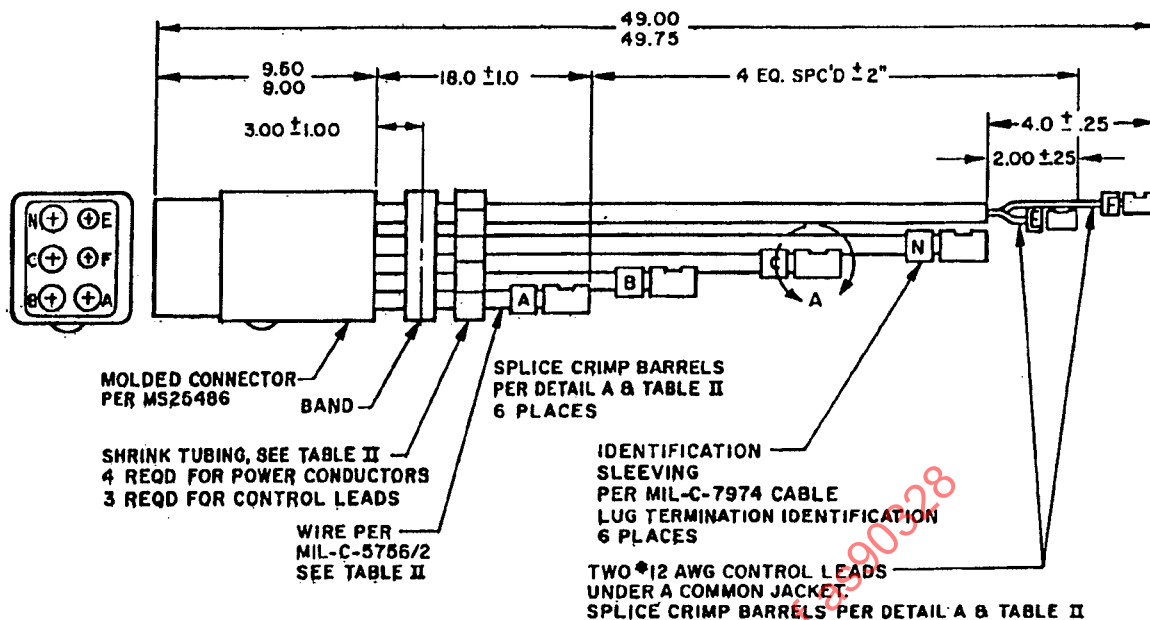


TABLE I. CABLE ASSEMBLY.

PART NO.	A,B,C,H WIRE SIZE	LUG TERMINALS		L FEET ±0.5	L METERS ±0.15	SUPERSEDES	TYPE
		WIRES A,B,C	WIRE H				
MS90328-13 MS90328-14 MS90328-15 MS90328-16 MS90328-17 MS90328-18	0	MS20659-118	MS20659-135	20 30 40 60 80 100	6.10 9.14 12.19 18.29 24.38 30.48	AN3430-3 & MS90328-1 & MS25486-4 AN3430-6 & MS90328-2 & MS25486-5 AN3430-4 & MS90328-3 & MS25486-6 AN3430-8 & MS90328-4 & MS25486-7 MS90328-9 & MS25486-6 MS90328-10 & MS25486-9	NO CONTROL LEADS
MS90328-19 MS90328-20 MS90328-21 MS90328-22 MS90328-23 MS90328-24	00	MS20659-120	MS20659-136	20 30 40 60 80 100	6.10 9.14 12.19 18.29 24.38 30.48	MS90328-5 & MS25486-10 MS90328-6 & MS25486-11 MS90328-7 & MS25486-12 MS90328-8 & MS25486-13 MS90328-11 & MS25486-14 MS90328-12 & MS25486-15	
MS90328-25 MS90328-26 MS90328-27 MS90328-28 MS90328-29 MS90328-30	0	MS20659-118	MS20659-135	20 30 40 60 80 100	6.10 9.14 12.19 18.29 24.38 30.48	AN3430-1A & MS25486-18 AN3430-5 & MS25486-19 AN3430-2A & MS25486-20 AN3430-7 & MS25486-21 MS25486-22 MS25486-23	WITH CONTROL LEADS
MS90328-31 MS90328-32 MS90328-33 MS90328-34 MS90328-35 MS90328-36	00	MS20659-120	MS20659-136	20 30 40 60 80 100	6.10 9.14 12.19 18.29 24.38 30.48	MS25486-24 MS25486-25 MS25486-26 MS25486-27 MS25486-28 MS25486-29	

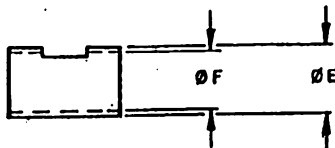
AS90328



SPLICE-ON REPLACEMENT PLUG

TABLE II.

PART NO.	A,B,C,N WIRE SIZE	SPLICE CRIMP BARRELS (SEE DETAIL A)		CONTROL LEAD SPLICE CRIMP BARRELS (SEE DETAIL A)		SHRINK TUBING, Ø x L (NOM)		TYPE
		Ø E	Ø F	Ø E	Ø F	A,B,C,N	CONTROL LEADS	
MS90328-37	0	.578/.558	.458/.438	.230/.210	.135/.128	1.25 x 6	.38 x 3-1/2 + .75 x 8	WITH CONTROL LEADS
MS90328-38	00	.640/.620	.520/.500	.230/.210	.135/.128	1.25 x 6	.38 x 3-1/2 + .75 x 8	WITH CONTROL LEADS
MS90328-39	0	.578/.558	.458/.438			1.25 x 6		NO CONTROL LEADS
MS90328-40	00	.640/.620	.520/.500			1.25 x 6		NO CONTROL LEADS



DETAIL A
SEE TABLE II