

SAE Technical Standards Board Rules provide that: "This report is published by SAE to advance the state of technical and engineering sciences. The use of this report is entirely voluntary, and its applicability and suitability for any particular use, including any patent infringement arising therefrom, is the sole responsibility of the user."

SAE reviews each technical report at least every five years at which time it may be revised, reaffirmed, stabilized, or cancelled. SAE invites your written comments and suggestions.

AS5828

FEDERAL SUPPLY CLASS  
4730

RATIONALE

AS5828 HAS BEEN REAFFIRMED TO COMPLY WITH THE SAE FIVE-YEAR REVIEW POLICY.

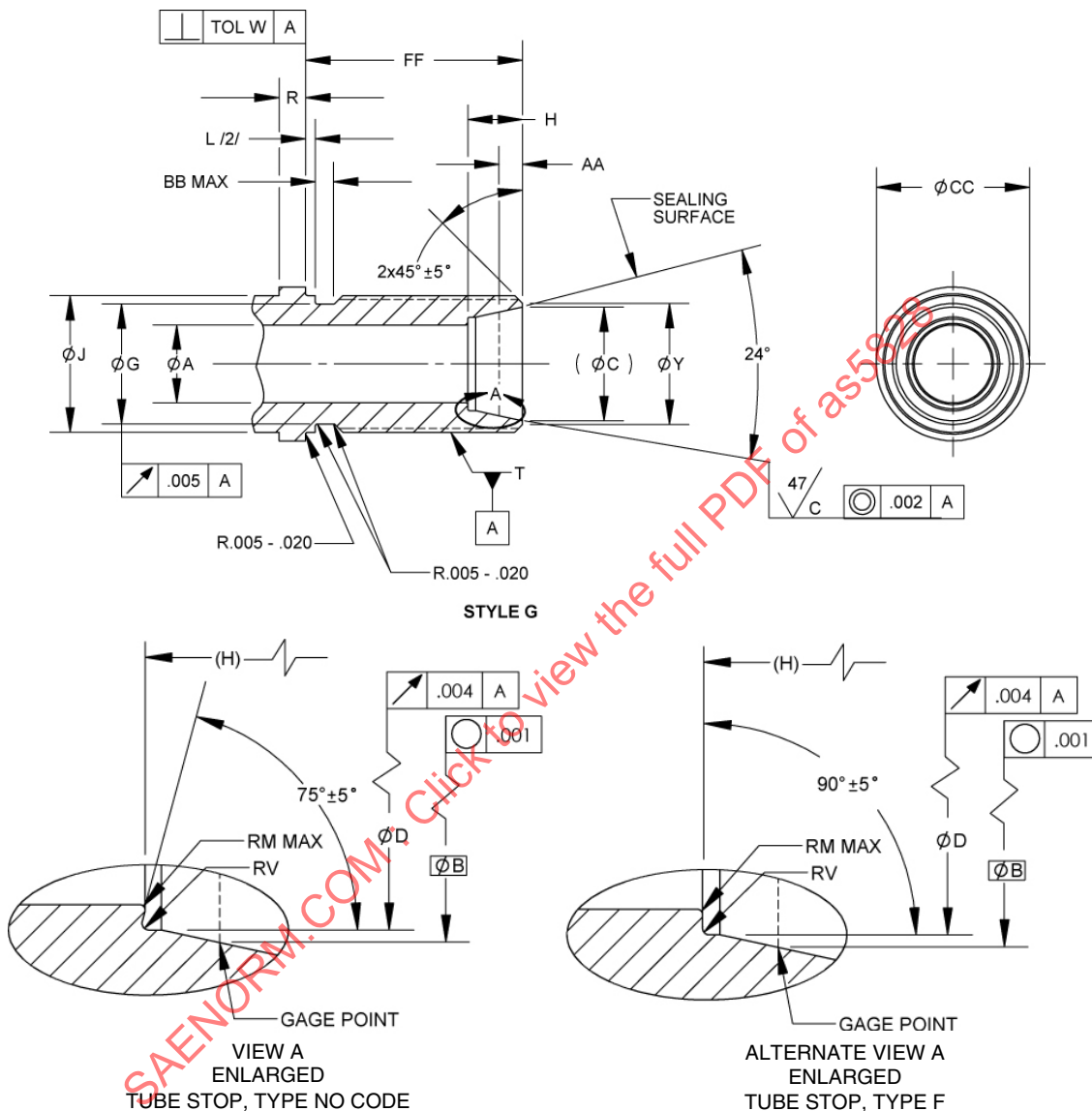
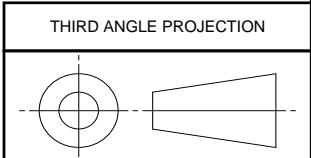


FIGURE 1 - FITTING END DESIGN, STYLE G

SAE values your input. To provide feedback on this Technical Report, please visit <http://www.sae.org/technical/standards/AS5828>



CUSTODIAN: G-3/G-3B

PROCUREMENT SPECIFICATION: NONE /1/



AEROSPACE STANDARD

FITTING END, BULKHEAD, FLARELESS,  
EXTRA FINE THREAD, DESIGN STANDARD

AS5828  
SHEET 1 OF 4

ISSUED 2005-12 REAFFIRMED 2015-04

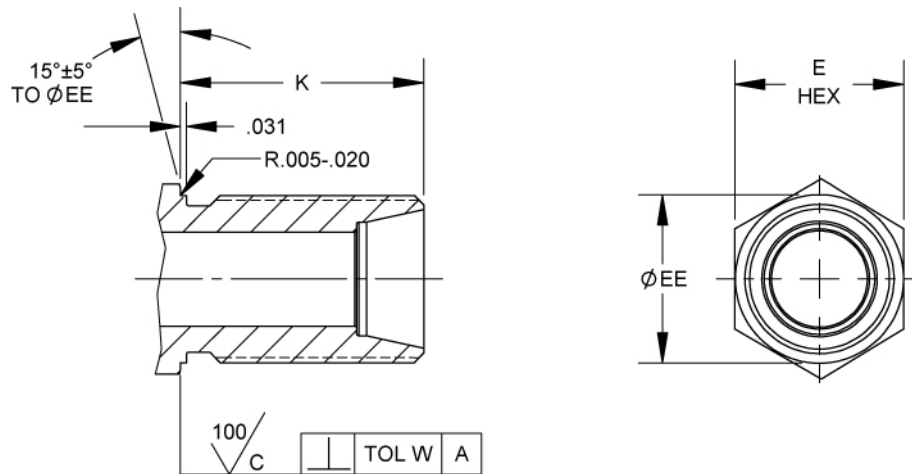


FIGURE 2 - FITTING END DESIGN, STYLE H  
SAME AS STYLE G, EXCEPT AS SHOWN

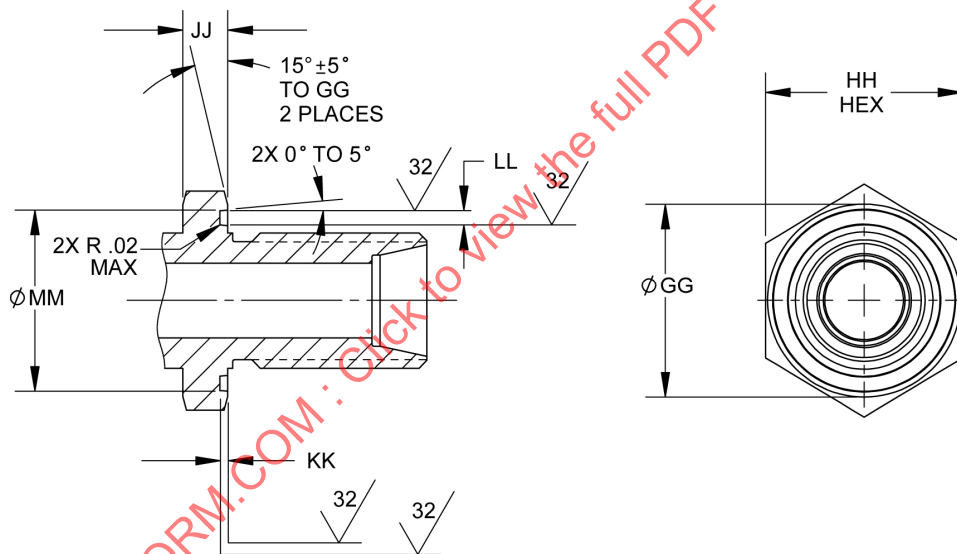


FIGURE 3 - FITTING END DESIGN, STYLE J  
SAME AS STYLE H, EXCEPT AS SHOWN

TABLE 1A - DIMENSIONS A-E

BASIC NO. AS5828 /9/ SIZE CODE	(NOMINAL TUBE SIZE)	T THREAD PER ISO 3161 CLASS 3A	A ±.003	B GAGE	(C)	D +.004/- .000	E
04	.250	.4375-28 UNJEF	.187	.2930	.319	.261	.678 - .691
06	.375	.5625-24 UNJEF	.297	.4160	.441	.386	.802 - .816
08	.500	.7500-20 UNJEF	.422	.5600	.601	.514	.990 - 1.003
10	.625	.8750-20 UNJEF	.500	.6860	.727	.641	1.113 - 1.128
12	.750	1.0625-18 UNJEF	.656	.8100	.852	.766	1.363 - 1.380
16	1.000	1.3125-16 UNJ	.875	1.0620	1.102	1.016	1.613 - 1.630
20	1.250	1.6250-16 UNJ	1.093	1.3160	1.355	1.270	1.863 - 1.880

TABLE 1B - DIMENSIONS G-M

BASIC NO. AS5828 /9/ SIZE CODE	G +.000/- .005	H ±.003	J	K ±.005	L	M MAX
04	.359	.234	.4294 - .4375	.969	.094	.005
06	.476	.250	.5538 - .5625	1.015	.094	.010
08	.654	.305	.7406 - .7500	1.156	.125	.010
10	.767	.350	.8647 - .8750	1.297	.125	.010
12	.938	.350	1.0511 - 1.0625	1.406	.125	.010
16	1.188	.415	1.3011 - 1.3125	1.406	.125	.010
20	1.501	.415	1.6136 - 1.6250	1.406	.125	.015

TABLE 1C - DIMENSIONS R-FF

BASIC NO. AS5828 /9/ SIZE CODE	R ±.030	V	W	Y	AA ±.003	BB	CC ±.031	EE	FF ±.005
04	.120	.005 - .020	.005	.365	.060	.090	.562	.668	1.032
06	.140	.005 - .020	.005	.480	.057	.098	.688	.792	1.078
08	.160	.005 - .020	.005	.660	.095	.109	.875	.980	1.250
10	.170	.005 - .020	.005	.775	.095	.122	1.000	1.103	1.391
12	.190	.005 - .020	.005	.945	.097	.140	1.187	1.353	1.500
16	.190	.005 - .020	.008	1.195	.093	.140	1.438	1.603	1.500
20	.190	.020 - .030	.008	1.505	.090	.140	1.750	1.853	1.500