

*Transmitted*

# ISO

INTERNATIONAL ORGANIZATION FOR STANDARDIZATION

## ISO RECOMMENDATION

### R 568

HEALD FRAMES  
FOR SINGLE OR DOUBLE ROW OF HEALDS

1st EDITION

April 1967

COPYRIGHT RESERVED

The copyright of ISO Recommendations and ISO Standards belongs to ISO Member Bodies. Reproduction of these documents, in any country, may be authorized therefore only by the national standards organization of that country, being a member of ISO.

For each individual country the only valid standard is the national standard of that country.

Printed in Switzerland

Also issued in French and Russian. Copies to be obtained through the national standards organizations.

## BRIEF HISTORY

The ISO Recommendation R 568, *Heald Frames for Single or Double Row of Healds*, was drawn up by Technical Committee ISO/TC 72, *Textile Machinery and Accessory*, the Secretariat of which is held by the Association Suisse de Normalisation (SNV).

Work on this question by the Technical Committee began in 1950 and led, in 1963, to the adoption of a Draft ISO Recommendation.

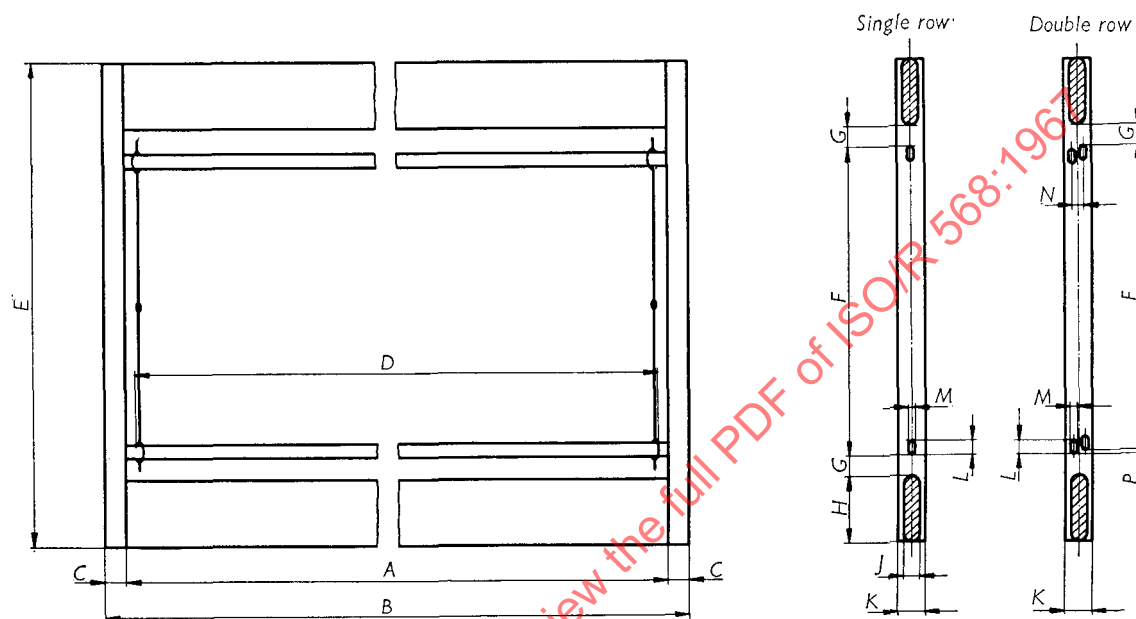
In September 1964, this Draft ISO Recommendation (No.703) was circulated to all the ISO Member Bodies for enquiry. It was approved, subject to a few modifications of an editorial nature, by the following Member Bodies:

Chile	India	Switzerland
Czechoslovakia	Korea, Rep. of	Turkey
France	Netherlands	U.A.R.
Germany	Poland	United Kingdom
Greece	Spain	U.S.S.R.

No Member Body opposed the approval of the Draft.

The Draft ISO Recommendation was then submitted by correspondence to the ISO Council, which decided, in April 1967, to accept it as an ISO RECOMMENDATION.

## HEALD FRAMES FOR SINGLE OR DOUBLE ROW OF HEALDS



- A Inside length between lateral supports  
 B Length of heald frame over lateral supports, excluding any attachments  
 C Width of lateral supports  
 D Useful width  
 E Height of heald frame over frame staves, excluding any attachments  
 F Outside distance between heald carrying rods  
 G Distance between heald carrying rod and frame stave  
 H Height of frame stave  
 J Thickness of frame stave  
 K Thickness of lateral support  
 L Height of heald carrying rod  
 M Thickness of heald carrying rod  
 N Distance from centre to centre of heald carrying rods  
 P Displacement of heald carrying rods